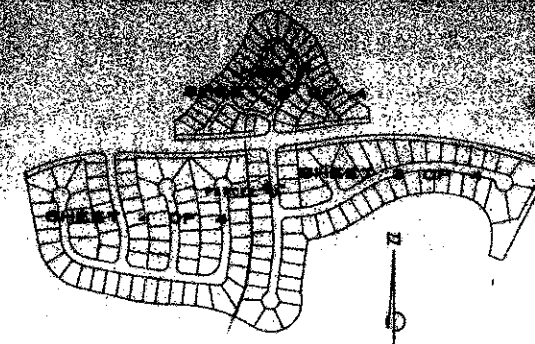
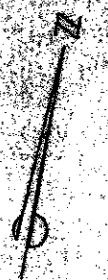
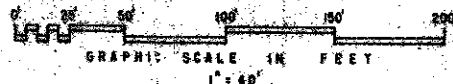


A PART OF LAKE CHARLESTON PLANNED UNIT DEVELOPMENT

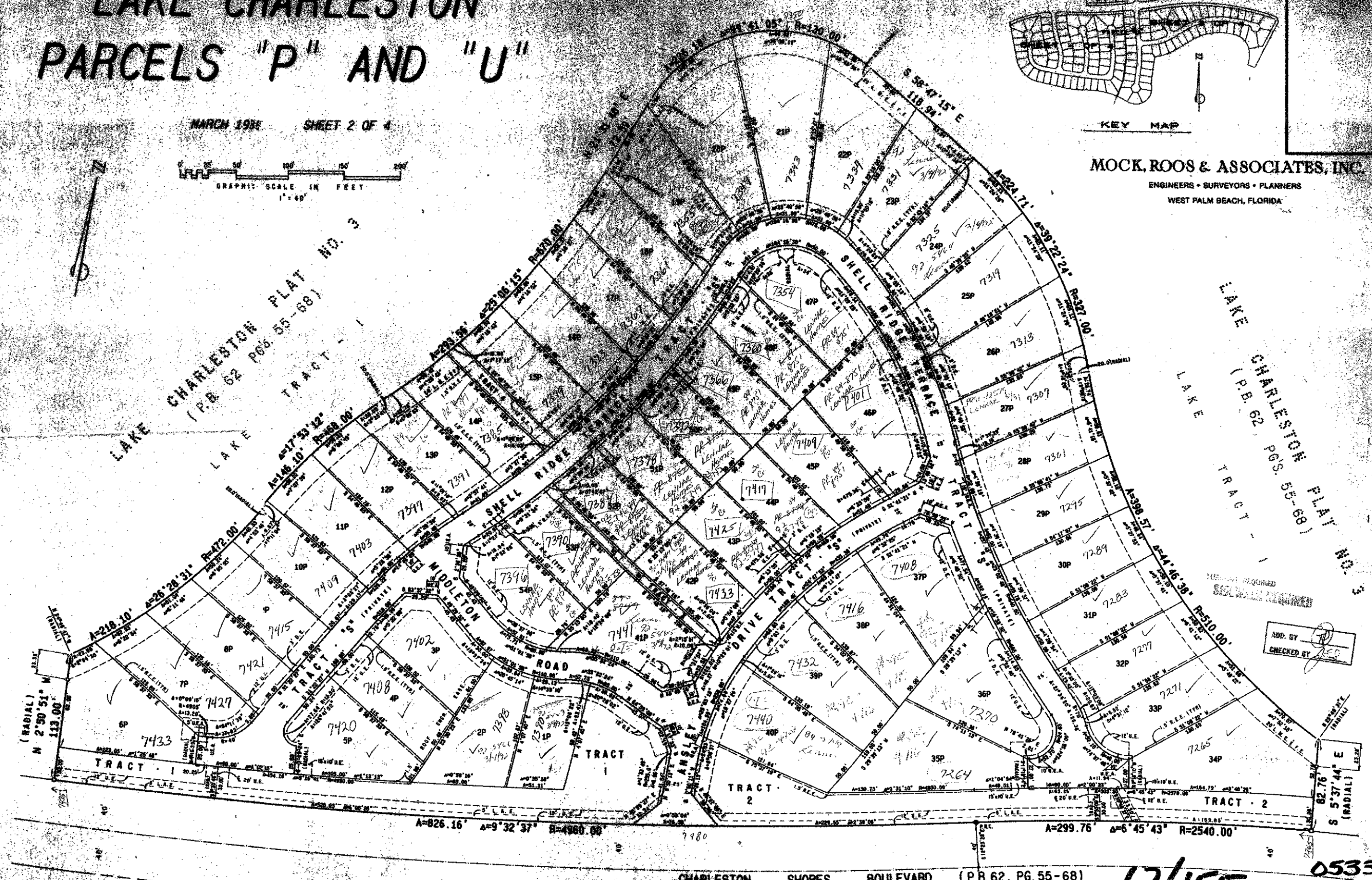
LAKE CHARLESTON PARCELS "P" AND "U"

MARCH 1988 SHEET 2 OF 4



KEY MAP

MOCK, ROOS & ASSOCIATES, INC.
ENGINEERS • SURVEYORS • PLANNERS
WEST PALM BEACH, FLORIDA



SUBDIVISION - Lake Charleston Parcels
PAGE 155-157
FLOOD MAP - ZOO A
ZONING - RT'S
STATE -
ZIP CODE - 33467
SE 76-76 T2Z 437

APP. BY [Signature]
CHECKED BY [Signature]

(SEE SHEET 4 OF 4)

CHARLESTON SHORES BOULEVARD (P.B. 62, PG. 55-68)

(SEE SHEET 3 OF 4)

62/155 0533
LAKE CHARLESTON PARCEL "P"